

ECT 625

Topload Carton Former

Delivering Exceptional Efficiencies with an Innovative Indexing Turret

Kliklok-Woodman's ECT machines are hot-melt adhesive-style topload carton and tray forming machines. The innovative indexing turret provides remarkable carton control and is capable of handling an impressive array of carton and tray designs, from typical four-corner styles to complex hexagonal, octagonal and other unusual multi-sided packages.

Speed



Forming Method

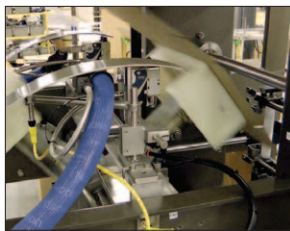


Model	Volume (in ³)
KFW	416 in ³
TransFormer	512 in ³
Genesis	653 in ³
Admiral	760 in ³
ECT 625	947 in ³
SR4W	1848 in ³

SMALLEST LARGEST

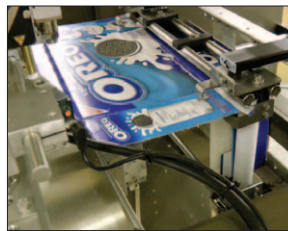
Carton Size Range Comparison

By volume (in³) of finished tri-seal cartons based on absolute minimum and maximum L x W x D.



Superior Carton Control

Following the feed stroke, the carton remains fixed to the forming mandrel through the entire forming process. Superior carton control yields a reliable finished carton, and the ability to handle aged or warped carton stock.



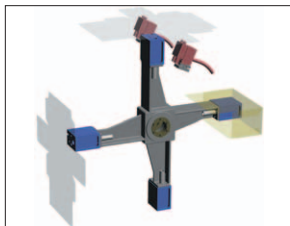
Reciprocating Forming Cavity

The reciprocating forming and compression motion on the ECT provides exceptional carton sealing. The double compression results in flawless, square cartons.



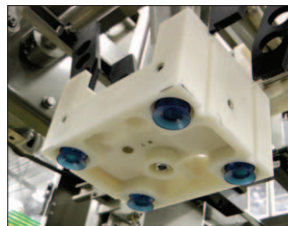
Integrated Take-away Conveyor

Standard equipment on the ECT and oriented to exit either left or right, the conveyor offers investment savings along with layout flexibility.



Four-Station Rotary Turret

The ECT's innovative technology provides discrete carton feeding, glue application, forming and finished carton strip-off at progressive turret positions with short, controlled movements and smooth mechanical action.



Composite Forming Heads

Lightweight, dimensionally accurate, long wearing and provide unusually quiet operation.

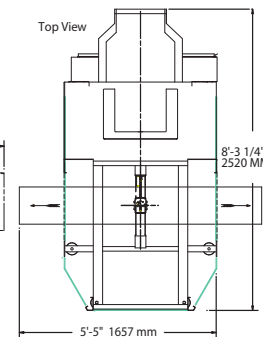
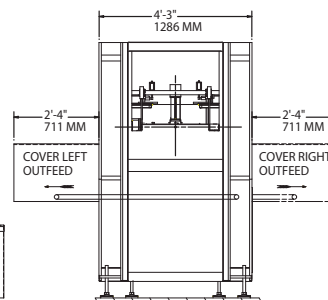
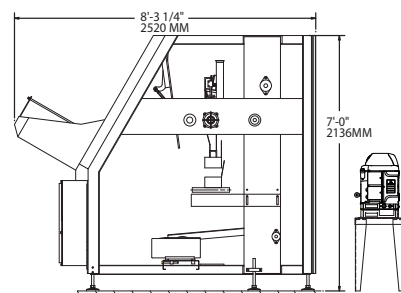
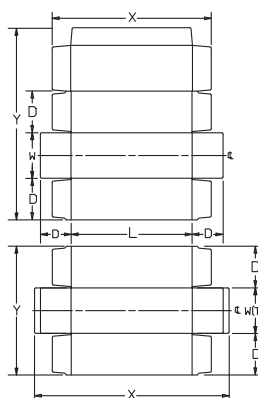
ECT 625

Topload Carton Former

PERFORMANCE

SPEED: Variable from 35 to 65 strokes per minute*

*Actual speed depends upon machine configuration and carton size and style. *Ask KW about meeting higher speed requirements.*



CARTON SIZE RANGE

	X	Y	L	W	W(T)	D
MIN (mm)	5 7/8" 150	4 3/4" 120	3 25/16" 100	2 3/4" 70	2 3/4" 70	1.0" 25
MAX (mm)	19 11/16" 500	24 7/8" 625	17 3/4" 450	10 13/16" 275	14 3/4" 375	4 25/16" 125

Note: A carton combining multiple maximum and/or minimum dimensions may not be compatible with the standard system.

OPERATING REQUIREMENTS

ELECTRICAL:

460 VAC ±5%, 3-Phase with earth ground (PE), 50/60 Hz standard
230 VAC ±5%, 3-Phase with earth ground (PE), 50/60 Hz available
380–420 VAC, 3-Phase Wye with Neutral and PE, 50/60 Hz available

NORMAL POWER CONSUMPTION: 25kVA

SERVICE REQUIRED: 50 Amps @ 460 VAC

AIR: 25 cfm (707 L/min) @ 80 psi (5.5 bar)

CONSTRUCTION

Fully-welded powder-coated mild steel frame. Stainless steel shafts. Chains, pulleys and sprockets are nickel-plated. Polycarbonate guards.

Approximate shipping weight: 2200 lb (1000 kg)

STANDARD FEATURES

- High-speed four-station rotary turret
- Fully automatic operation
- Compact construction
- Integrated machine-belt-style outfeed conveyor
- Rear-mounted operator panel
- Electrical overload protection for motor and pump
- 1 H.P. vacuum pump for forming heads, PIAB for carton feed and placement
- Allen-Bradley Panelview HMI
- A-B PLC controls
- CAT3 safety
- Stainless steel electrical enclosure with flange-mounted main disconnect
- Fully enclosed barrier guarding with interlocked doors
- Timed stop control
- Simple size change using change parts
- Static hopper
- Hopper capacity up to 1500 blanks of 0.016" (0.40 mm) board stock (24"/610 mm stack)
- CE/ETL approved electricals

OPTIONAL FEATURES

- Flighted outfeed conveyor
- Controlled carton supply system
- Low carton supply alarm
- Special electricals and voltages
- Dauber-style glue forming system